



Anthology, Inc.

Installing or Changing the Cognitive Barcode Blaster Advantage LX Driver

Overview/Summary

This whitepaper is meant to cover installing a new driver or possibly a different driver for the Blaster Advantage LX printer. A known issue in the printer driver version prevents label formats larger than 2.09 inches from printing correctly (May 2007) may require you to reinstall a new driver. This can cause labels to print out of alignment for the standard default stock size of 2.4" x 1". This issue occurred with versions 4.0.80Beta, 4.1.1, and 4.3.4.

A workaround to this issue is the use the Barcode Blaster Advantage 4 inch driver.

If you've recently replaced or moved your barcode blaster printer and found the labels no longer align or print properly you may need to perform the following steps.

If this is the first time you'll be installing the barcode printer then you can skip the removal instructions below and start with the downloading and install instructions on the next pages.

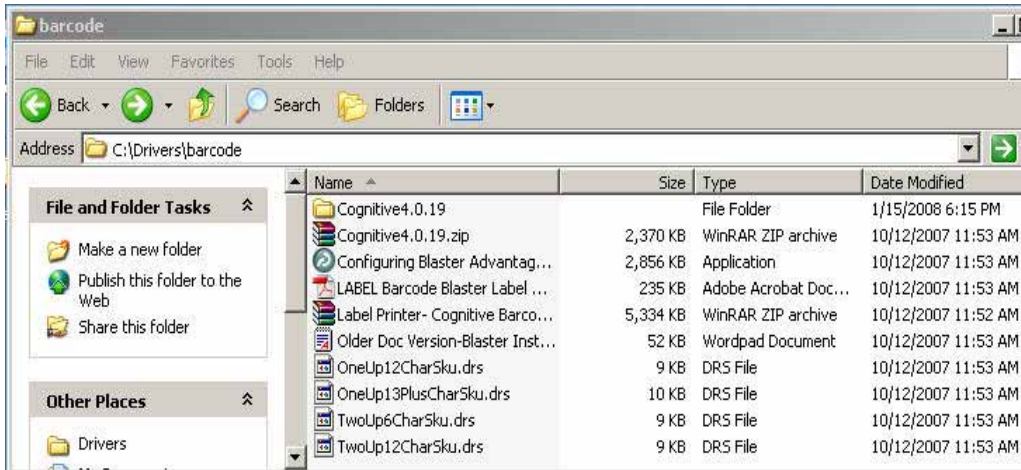
Removing the old driver

At each workstation that does not have the printer physically connected to it:

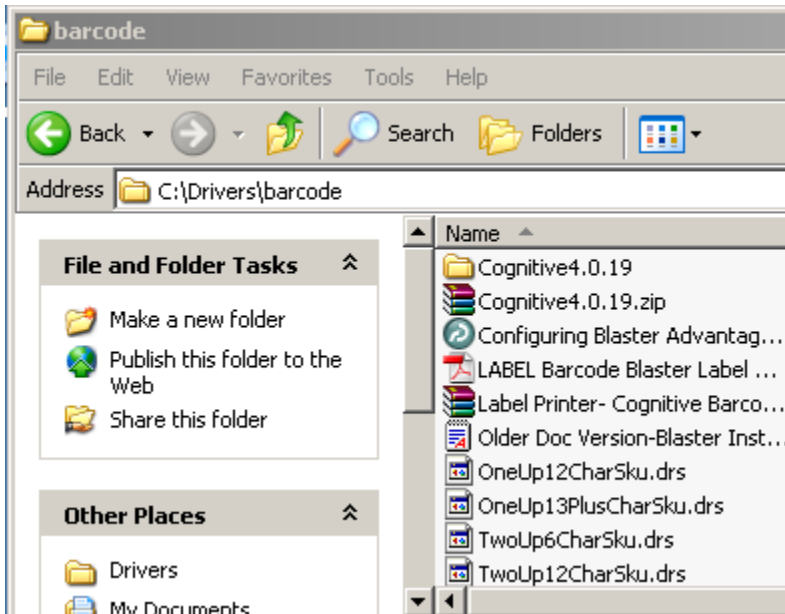
1. Go to each workstation that may have the "Networked" or "Shared" printer installed. This is not the machine that has the printer physically connected to it.
2. Click on Start | Printers and Faxes. You may need to click on Control Panel first.
3. Locate the Barcode printer icon. This could be named "Label Printer", "Barcode Printer", "Generic Text Only", or "Cognitive LX Label". Be sure you are selecting the correct printer. Anthology Tech support cannot be responsible for reinstalling your printer drivers.
4. Right click on the appropriate icon and choose Delete.
5. At the one machine that has the printer physically connected to it- Repeat the same steps as above to remove the old printer driver.

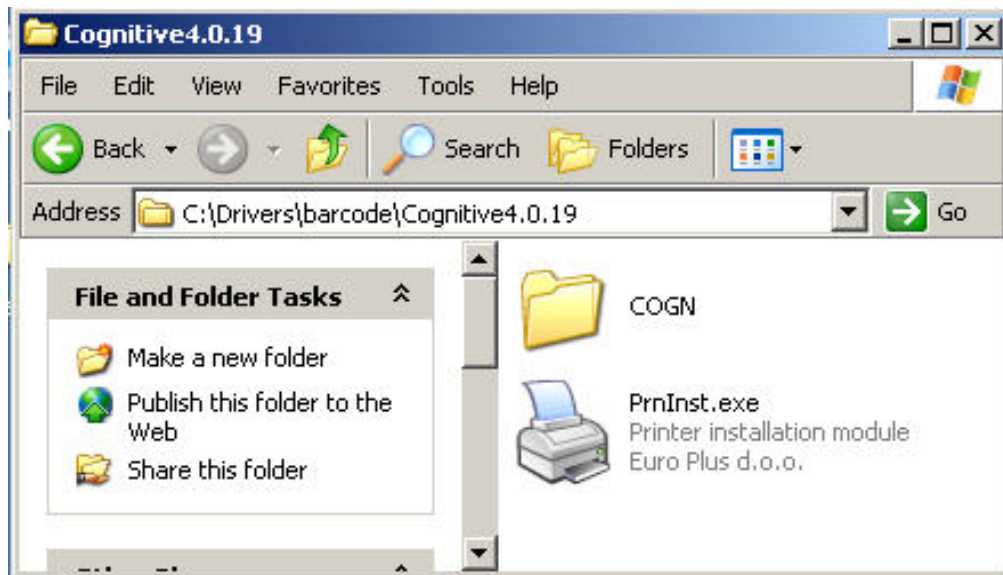
Installing the new driver

- Download the correct driver from the Customer Zone. This is stored under the Downloads page as: [Label Printer- Cognitive Barcode Blaster Advantage LX Driver and Instructions.zip](#)
- Copy this file to your local drive of the machine that has the printer physically connected. It's best to download this file to you C:\Drivers\barcode folder. Right-click on the downloaded files and extract its contents. Make sure you extract the files from the "Cognitive4.0.19.zip" as well.
- Locate the folder you just extracted. In our example they are located at C:\Drivers\barcode Folder. Double click the Drivers folder. Then double click the barcode folder

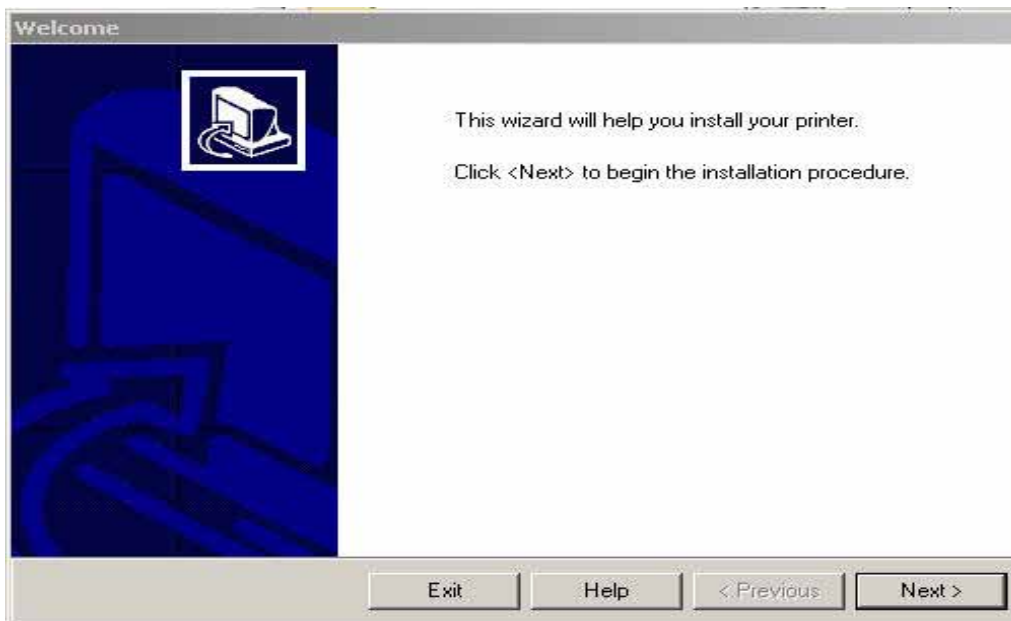


- Now double click the Cognitive4.0.19 folder.



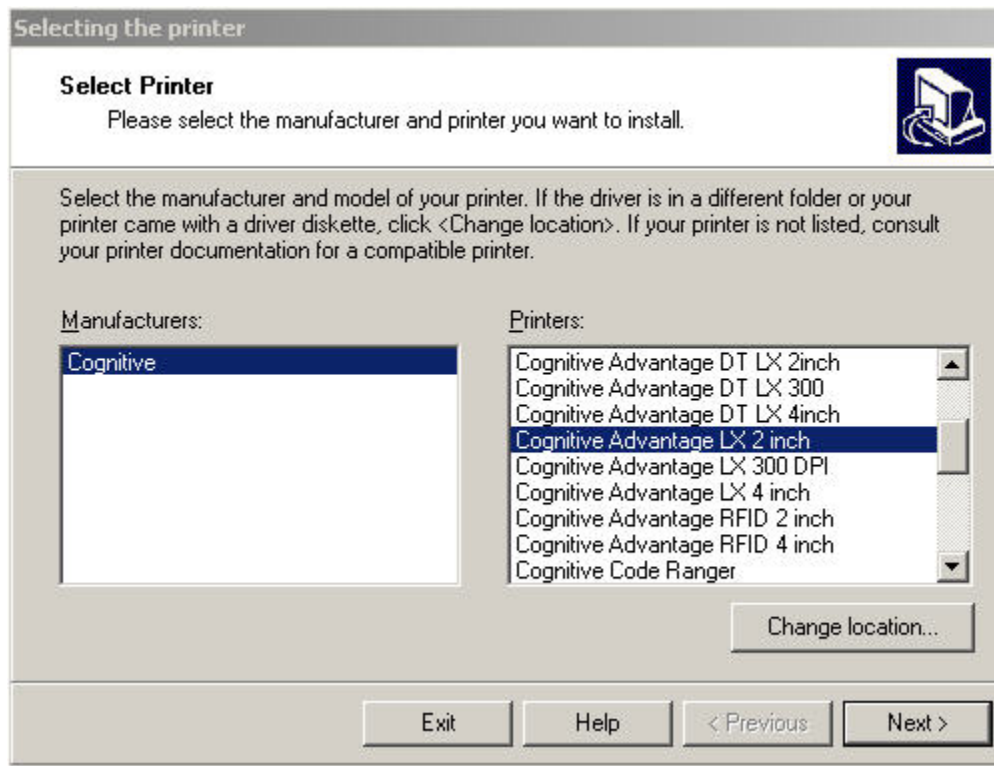


10. Once you double click the Cognitive4.0.19 folder you will see a file called PrnInst.exe. Double click that file to launch the installation wizard.

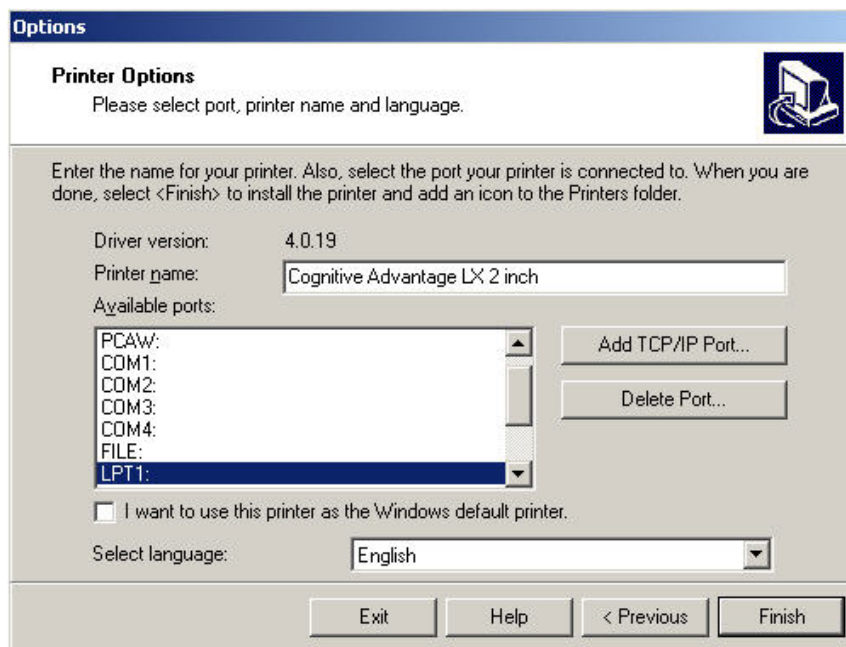


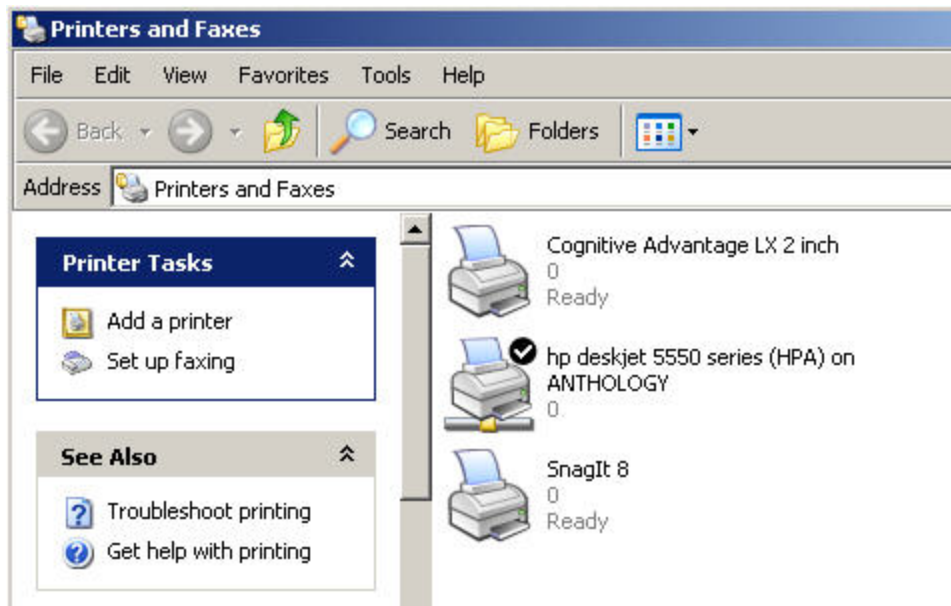
11. Click Next.

12. Now select the Select the Printer. "Cognitive Advantage LX 2 inch.



13. LPT1: Should be selected by default. Choose Finish





Importing the custom label formats

Before you can begin to print labels to this new printer driver, you must complete a couple of other steps. This step finalizes the label format capabilities, allowing for some extra layout customizations that are not possible with the default driver install. If you have problems with labels not aligning or printing correctly you may need to redo this step.

14. Go back to the Printers folder. Select the barcode blaster printer driver with a single left click.
15. View Properties of the printer by doing a single right click on top of the printer icon and choose Properties.
16. Go to the Advanced tab
17. Go to the Printing Defaults button on the lower left
18. Go to the Import/Export Settings tab
19. Click on the Import button
20. Browse to the C:\Drivers\Blaster folder where you downloaded and extracted the printer driver files.
21. There are currently three configurations you can choose from. If you do not plan on printing the 2 up labels for smaller items you should use the OneUp format.
 - a. "TwoUp6Charsku.drs" – prints using a larger font for 2 up labels. Barcodes print larger for better readability, but is limited to 6-character SKU on a 2up label.
 - b. "TwoUp12CharSku.drs" – prints using a smaller font. Barcodes print smaller, but is limited to a 10 or 12 character SKU that will fit on a 2up label.
 - c. "OneUp12CharSku.drs"- prints using standard font for 1 up labels
22. You may assign different files to different workstations if you need to print one label size from a particular workstation and another size from a different computer.

23. Wait for a few moments to ensure the Import has completed then OK back out of both screens.
24. Go to Visual Anthology at each station, Master Files | Stations | Printing tab. Reselect the new printer for every label type listed (inventory, customer, or vendor). F10 Save Changes.

Troubleshooting

- A. I have some inventory items whose SKU is longer than 13 characters, or that have #'s and Letters. When I print the barcode label the barcode seems to be as wide as the label, but I cannot scan the barcode.

Q: This could be due to a natural space limit on the labels. With some sku's there is simply not enough physical space on the standard label size of 2.4" x 1" to print the full width required. There is an alternative label format file that you can try to see if the size of the printed barcode 'font' can be shrunk. This is not a guaranty, some older barcode scanners simply cannot read the finer/smaller barcodes that can be printed. There is a natural limit to how small the barcode can be printed and how small of a barcode can be scanned with your scanners. If you would like to try the alternative label format look in the contents of the files extracted in step #7 from above. This file is called "*OneUp13PlusCharSku.drs*". Follow the instructions in the section titled "Importing the Custom Label Formats" and select the alternative file. This will affect all labels printed for that particular workstation, regardless of the sku length and could have an impact on the scannability of a label.